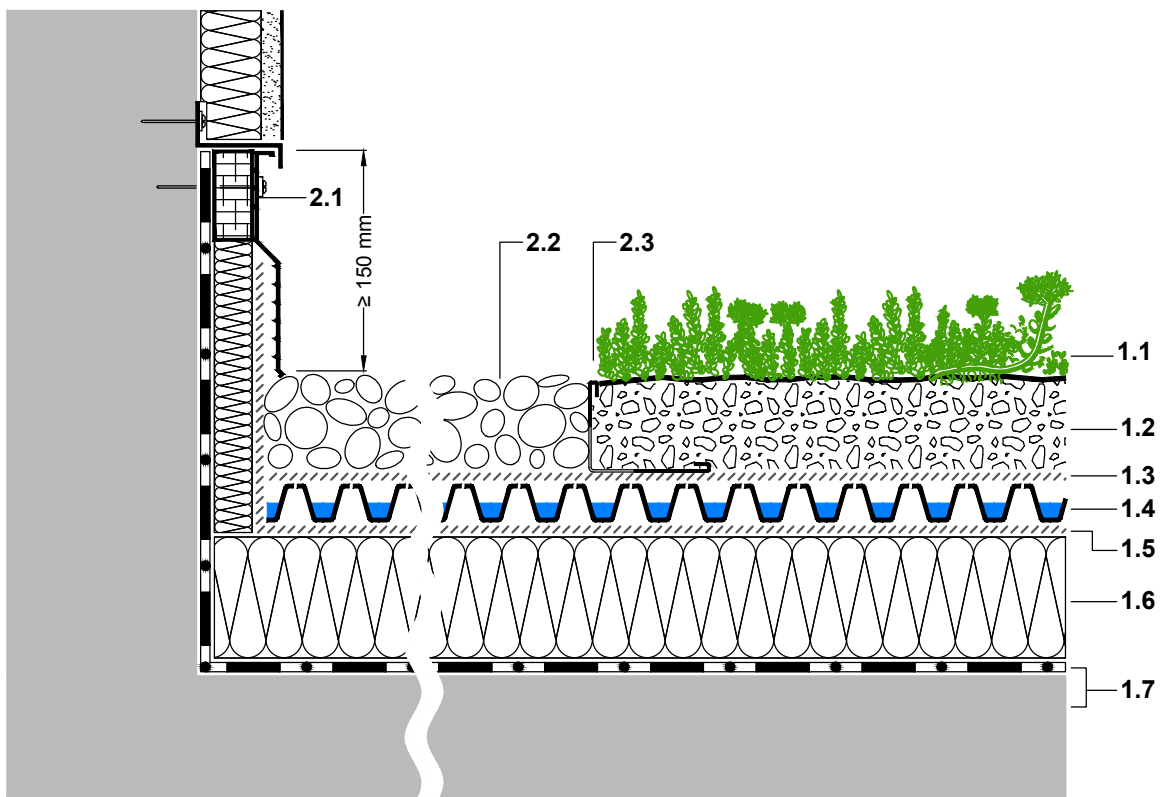
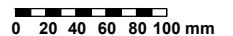



- 1.1 Plant community 'Sedum Carpet'
 - 1.2 System Substrate 'Sedum Carpet', depth ≥ 60 mm (depending on climate conditions)
 - 1.3 Filter Sheet SF
 - 1.4 Drainage element Floradrain® FD 25-E
 - 1.5 Separation Membrane TGV 21
 - 1.6 XPS thermal insulaton
 - 1.7 Roof construction with root resistant water proofing
-
- 2.1 Clamping and Protection Profile AP 150
 - 2.2 Gravel strip
 - 2.3 ZinCo Gravel Retainer KL 60/80



PLEASE NOTE:

THIS DETAILED SOLUTION MAINLY REFERS TO THE GREEN ROOF SYSTEM. THE ROOF CONSTRUCTION IS ONLY SCHEMATIC. THE DIMENSIONS SHOWN ARE REQUIRED DIMENSIONS FOR THE ZINCO GREEN ROOF SYSTEM. IN SOME CASES, LOCAL CODES AND STANDARDS MAY REQUIRE GREATER DIMENSIONS FOR A PARTICULAR APPLICATION. THE DESIGNER / PLANER MUST VERIFY COMPLIANCE WITH LOCAL CODES AND STANDARDS.



	Issued on: 03.04.2008	System: 'Sedum Carpet' with Floradrain® FD 25 Inverted Roof	Drawing title: Wall connection with gravel strip	Drawn by: pbi
	Modified: 10.12.2014 12:03		Job title: -STANDARD ARCHITECTURAL DETAIL-	Scale: 1:5
File: CAD_en_SC_FD25_Ir_Wc01.dwg			Subject to technical alterations and printing errors; Authorized by ZinCo GmbH, 72622 Nuertingen, Germany Tel. ++49/7022/6003-100 Fax ++49/7022/6003-100, e-mail: info@zinco-greenroof.com, www.zinco-greenroof.com	